

Inspection Report

Report No.

PRODUCT DESCRIPTION



Client Name:	
Product Name: Breeding bees equipment	
Inspector: Stephan jiang	
Report approver: Jason Wan	
Inspection location:	Changge, Henan
Inspection date:	2012-02-28
Your reference number: N/A	
P/O number:	
Inspection type : Container loading supervision(CLS)	
Supplier:	
Vendor:	
Order quantity:	See attached table
Pcs ready for inspection:	100% ready
Reference sample available:	NO

Factory cooperation	Factory organization	Inspector's opinion on the factory
Average	Average	Average

Loading starting time	Loading completion time
18 :20	20 :00

IMPORTANT REMARKS / GENERAL DEFECTS

1. Approval sample was not available for this container loading supervision
2. The factory loaded products, maybe it would change shape after the long distance transport.
3. The factory refused to open the pallet packaging to us for check.

LOADING AND PACKING REQUIREMENTS

1. Loaded Quantity

Expected Result	Result	Actual Finding / Comments
Total nb of Container(s) loaded: 20" : / 40" : / 40" HC :	N/A	40" HC
Total nb of Pallets loaded:	N/A	3 pallets
Total nb of Cartons loaded:	N/A	178 cartons + 50 woven bags
Numbering of cartons: (to)	N/A	No carton number found.
TOTAL NUMBER OF PIECES READY :		100% ready and see below attached table

Truck plate numbers	鲁 RG919 挂
---------------------	-----------

The attached table

Container No	Product description	CTN Q'TY	Q'TY (pcs)	SEAL NO.
GESU5421286	Shake honey machine	30 ctns	59 pcs	YMLW411793
	Table uncapping	60 ctns	60 pcs	
	Bee smoker	4 ctns	59 pcs	
	Beehive	30 woven bags	59 pcs	
	Beehive frame	13 ctns+woven bags	1200 pcs	
	Prevent bees clothing	2 ctns	60 pcs	
	Prevent bees cap	1 ctns	59 pcs	
	Prevent bees shoes	4 ctns	59 pairs	
	Prevent bees gloves	1 ctn	59 pairs	
	Honey fork		59 pcs	
	Filter screen	1 ctn	59 pcs	
	Plastic bucket	15 ctns	123 pcs	
	Stainless steel basin	1 ctn	59 pcs	
	Stainless steel bucket	59 ctns	59 pcs	
	500G glass bottle	3 pallets	6000 pcs	
	1000G glass bottle		2400 pcs	
Glass bottle lid	7 woven bags	8450 pcs		

2. Shipping Marks

a. Carton Front Mark		
Expected Result	Result	Actual Finding / Comments
	N/A	Refer to below outer packing

b. Carton Side Mark		
Expected Result	Result	Actual Finding / Comments
	N/A	Refer to below outer packing

3. Loading Process

Client's specific instructions for Loading Process :

EMPTY CONTAINER

Requested Check	Actual Finding / Comments
Container general conditions : - water - rust holes - dust - grease - general cleanliness	- no water - no rust holes - clean - no grease
Container door numbers	GESU5421286

Inside container numbers	
Outside container numbers	

1/4 FULL CONTAINER	
Requested Check	Actual Finding / Comments
Loading method : - By hand or machine - Pallets or individual carton	-By hand & machine - Individual carton & pallets
Loading by the top or the back of the truck?	Loading by the back
Describe how the cartons are piled up (collapse risks)	Refer to photo below
How many layers of cartons inside the container ?	3-6 layers due to the irregular shape package.
Did any cartons fell on the floor during loading?	No

1/2 FULL CONTAINER	
Requested Check	Actual Finding / Comments
Did any cartons fell on the floor during loading?	No

3/4 FULL CONTAINER	
Requested Check	Actual Finding / Comments
Did any cartons fell on the floor during loading?	No

FULL CONTAINER	
Requested Check	Actual Finding / Comments
Is the container completely full? If no, describe how carton are tied together.	Please refer to below pictures
Is there any space between the top of the last layer of cartons and the roof of the container ?	Please refer to below pictures
Container(s) seals number	YMLW411793
Did any cartons fell on the floor during loading?	No

CONTAINER CLOSING	
Requested Check	Actual Finding / Comments
Are seals temporary or definitive?	Definitive seals

Remark Photos :



The factory refused to open the pallet packaging of glass bottle to us for check.

Loading Pictures:



Container



Container door number



Container number outside



Container number inside



Seal



Truck plate numbers



Empty container



1/4 Full container



1/2 Full container



3/4 Full container



Full container



Right door of the container



Left door of the container



Closed container



Seals details on container

N/A

PRODUCT PICTURE		
Expected Result	Result	Actual Finding / Comments
-	N/A	Please see picture

Client's comments:

Pictures:

Shake honey machine



N/A



Table uncapping





Bee smoker





Beehive



Beehive frame

N/A



Bees clothing



N/A

Bees cap



N/A

Bees shoes





N/A

Bees gloves



N/A

Honey fork





Filter screen



Plastic bucket



Stainless steel basin



Stainless steel bucket







Glass bottle



N/A

Glass bottle lid





N/A

4. Packing and packaging

a. Unit packing:

Expected Result	Result	Actual Finding / Comments
	N/A	Refer to below pictures

Packing Pictures

Shake honey machine



N/A

Table uncapping



N/A

Bee smoker



Beehive



N/A

Beehive frame



Prevent bees clothing





N/A

Bees cap



N/A

Bees shoes



Bees gloves & Honey fork



N/A



Filter screen



Plastic bucket



N/A



Stainless steel basin



Stainless steel bucket





Glass bottle



Glass bottle lid



c. Outer packing:

Sealing method (staples - adhesive - plastic band - metal band): adhesive

Expected Result	Result	Actual Finding / Comments
	N/A	Refer to below pictures

Picture

Shake honey machine



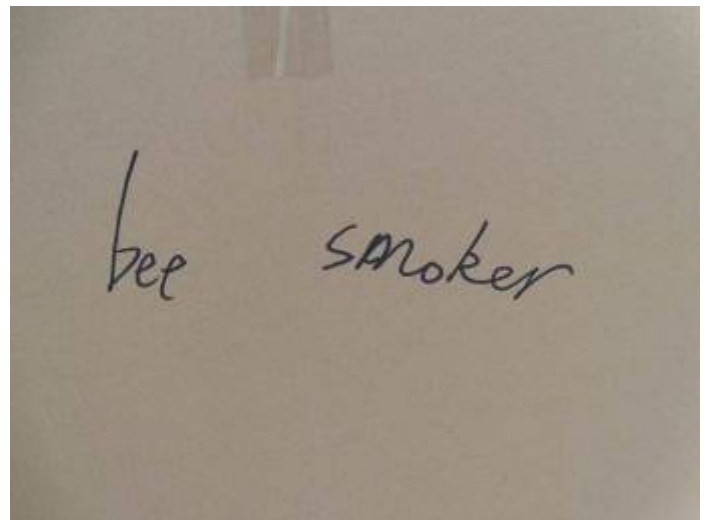
N/A

Table uncapping



N/A

Bee smoker



Beehive



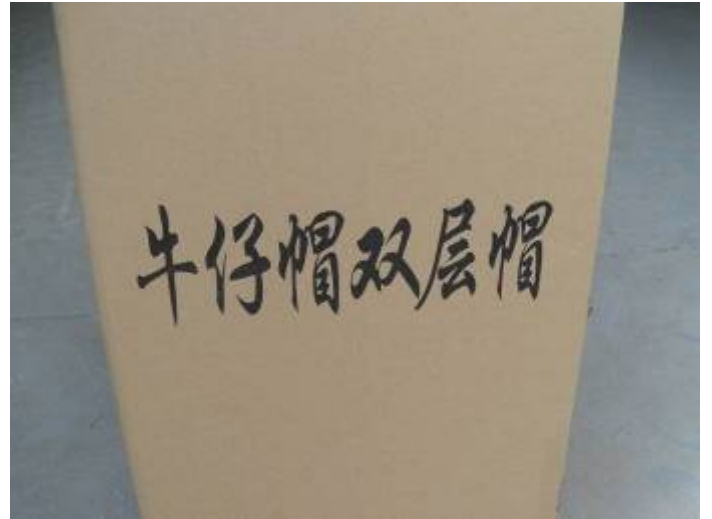
Beehive frame



Bees clothing



Bees cap



Bees shoes



N/A



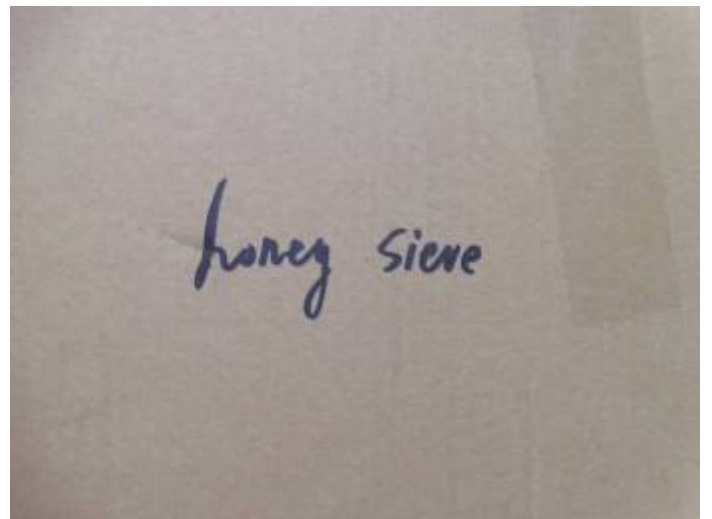
Bees gloves & Honey fork



N/A



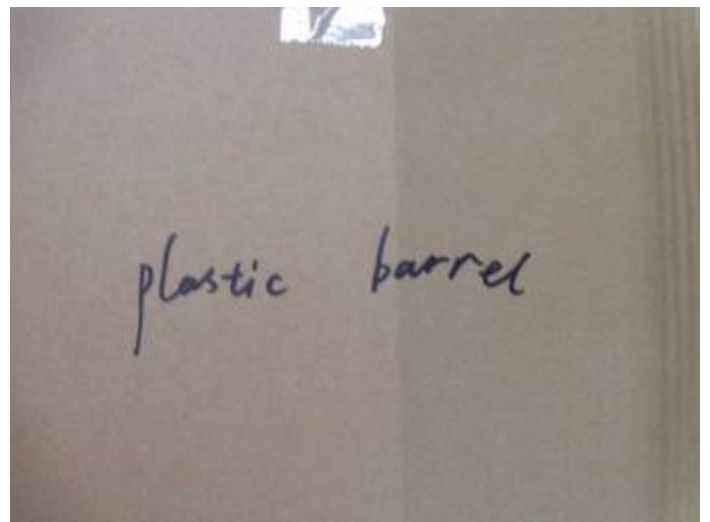
Filter screen





N/A

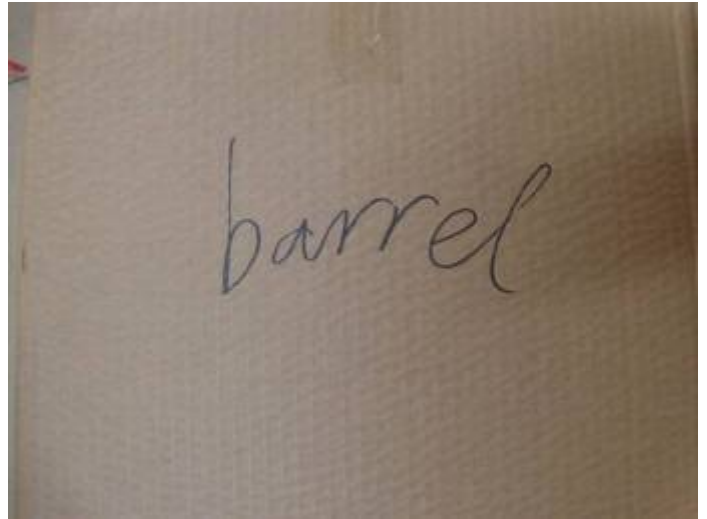
Plastic bucket



Stainless steel basin



Stainless steel bucket



Glass bottle



Glass bottle lid



SAMPLE COLLECTION

[0] pcs of shipment samples were collected by inspector
[0] pcs of defective samples were collected by inspector

Other Pictures



Total cartons



Total cartons



Total cartons



Total cartons



Total cartons



Total cartons

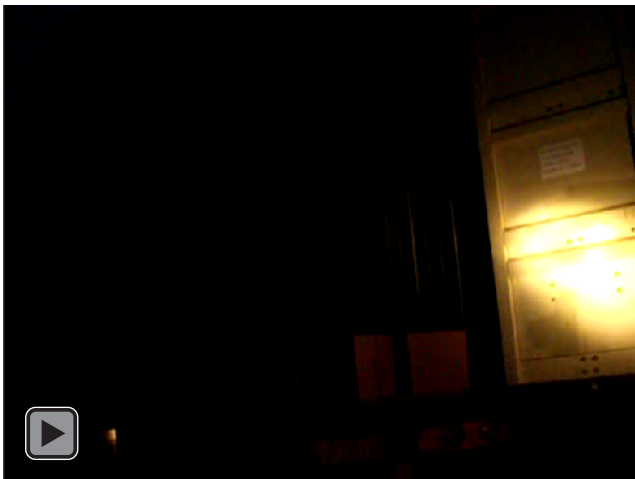


Total cartons

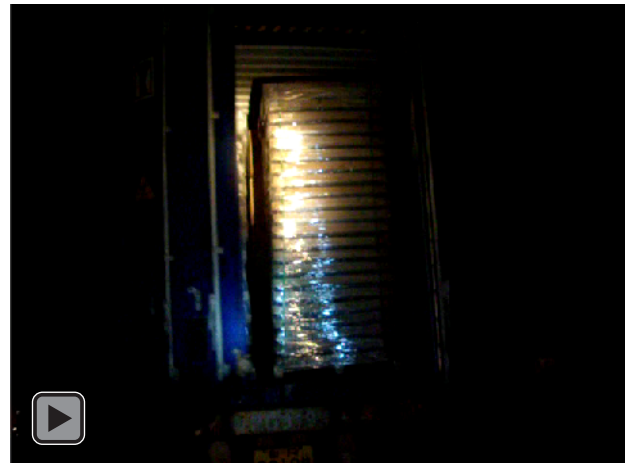


Total cartons

Loading Videos



1-2 FULL CONTAINER



FULL CONTAINER

End of the Report